

NEW



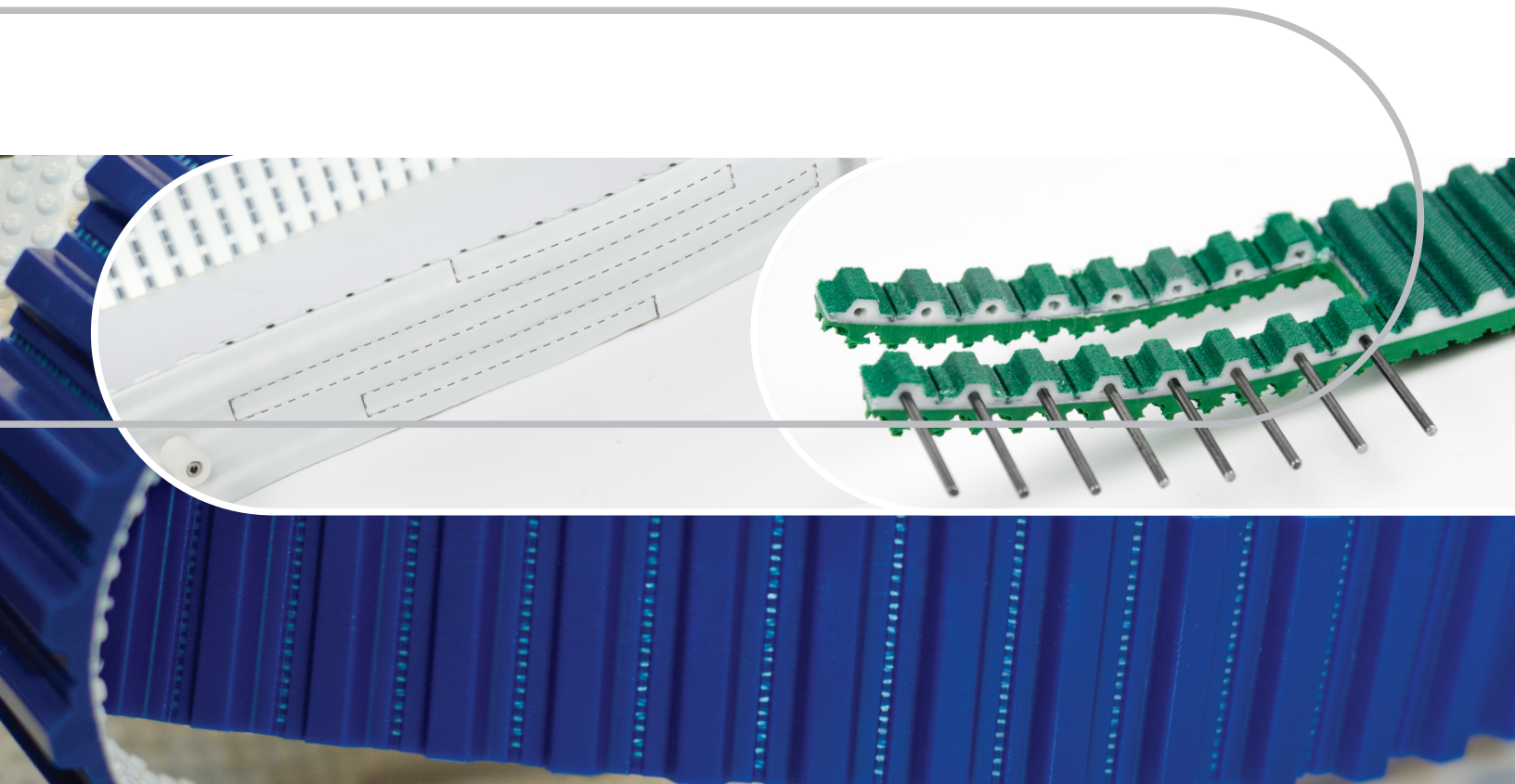
Mechanical pin splice: simple, fast, effective



AIP's offering of mechanical pin joint offers fast installation and reliable joining. This is ideal for reducing machine downtime during replacement and maintenance without sacrificing joining integrity and performance. This installation-friendly, profile-compatible joining method is suitable for all pitch sizes and conveying applications.

Tooth Profile (Pitch)	Width
H	1.00" to 6.00"
T10	25 to 150 mm
AT10	25 to 150 mm
AT20	25 to 100 mm
8M	25 to 150 mm
14M	25 to 55 mm

**Not available for drive belts.*

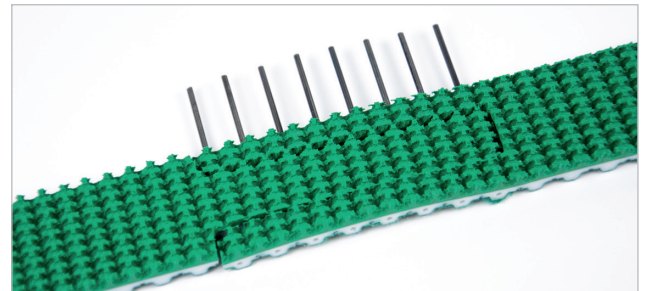
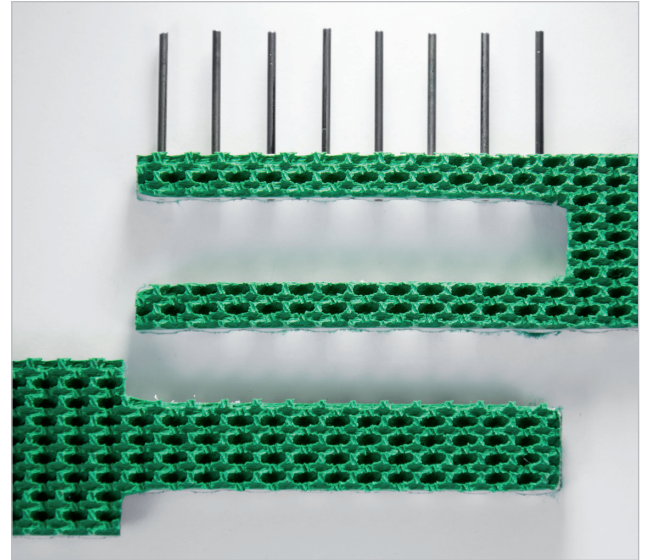


Easy installation, huge time savings

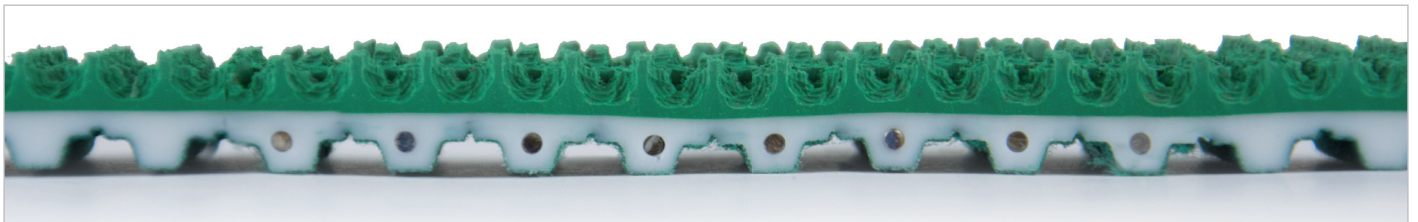
AIP's offering of the unique pin splice makes belt installation simple. Precision holes through the entire belt width ensure pin placement is secure and reliable for most conveying applications. Installation is simple and fast, making the pin joint perfect for downtime reduction, hard-to-access belts, and multi-belt layouts.

Benefits

- Fast and easy installation with minimal or no tools
- Minimized downtime due to speed and ease of installation
- Low-noise running resulting from elimination of exposed metal
- No loss in minimum pulley requirements
- Strong and durable joining that is suitable for most conveying applications
- Available in the most common pitches
- Excellent for belt applications with special backings including, but not limited to Linatex, NBR rough top, 85 A urethane, PVC, Heatmate, foam, etc.



Pin joints can be installed on belts with or without covers.



For more information, please contact your local Accurate representative: 636-741-5700.



908 JEFFCO EXECUTIVE DRIVE
IMPERIAL, MO 63052

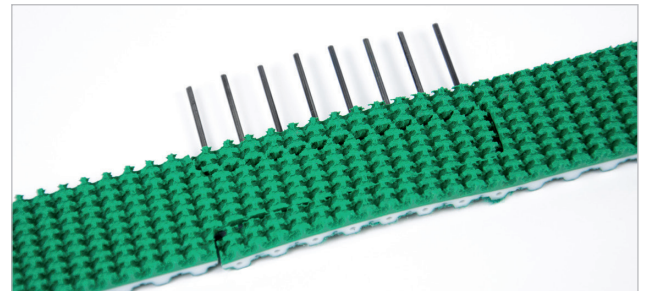
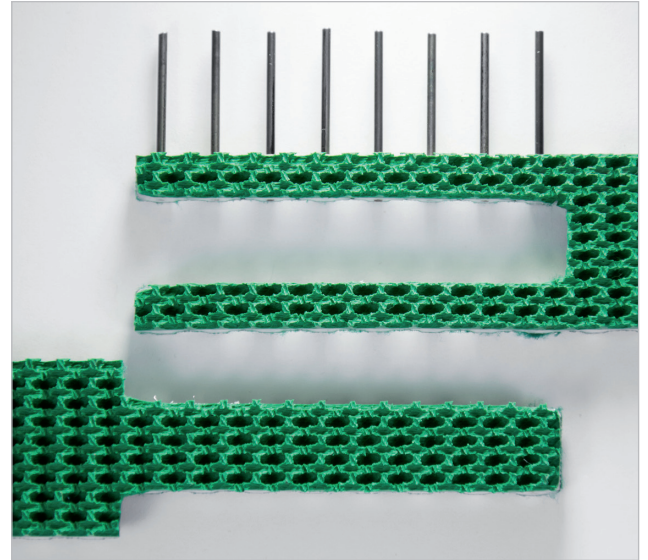
636/741-5700 PHONE
636/741-5701 FAX
www.accurateindustrial.com

Easy installation, huge time savings

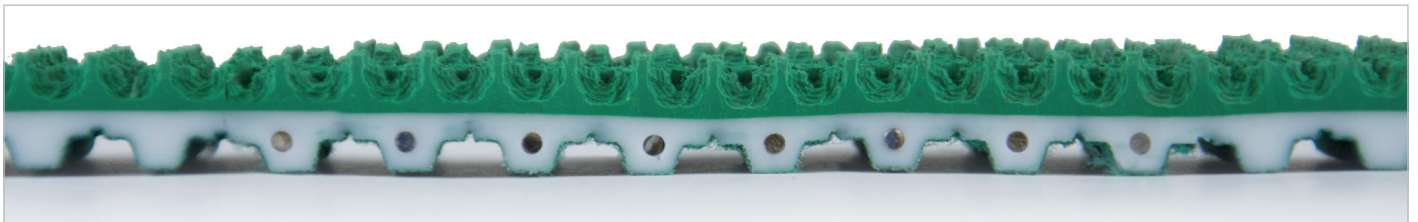
AIP's offering of the unique pin splice makes belt installation simple. Precision holes through the entire belt width ensure pin placement is secure and reliable for most conveying applications. Installation is simple and fast, making the pin joint perfect for downtime reduction, hard-to-access belts, and multi-belt layouts.

Benefits

- Fast and easy installation with minimal or no tools
- Minimized downtime due to speed and ease of installation
- Low-noise running resulting from elimination of exposed metal
- No loss in minimum pulley requirements
- Strong and durable joining that is suitable for most conveying applications
- Available in the most common pitches
- Excellent for belt applications with special backings including, but not limited to Linatex, NBR rough top, 85 A urethane, PVC, Heatmate, foam, etc.



Pin joints can be installed on belts with or without covers.



For more information, please contact your local Accurate representative: 636-741-5700.



908 JEFFCO EXECUTIVE DRIVE
IMPERIAL, MO 63052

636/741-5700 PHONE
636/741-5701 FAX
www.accurateindustrial.com